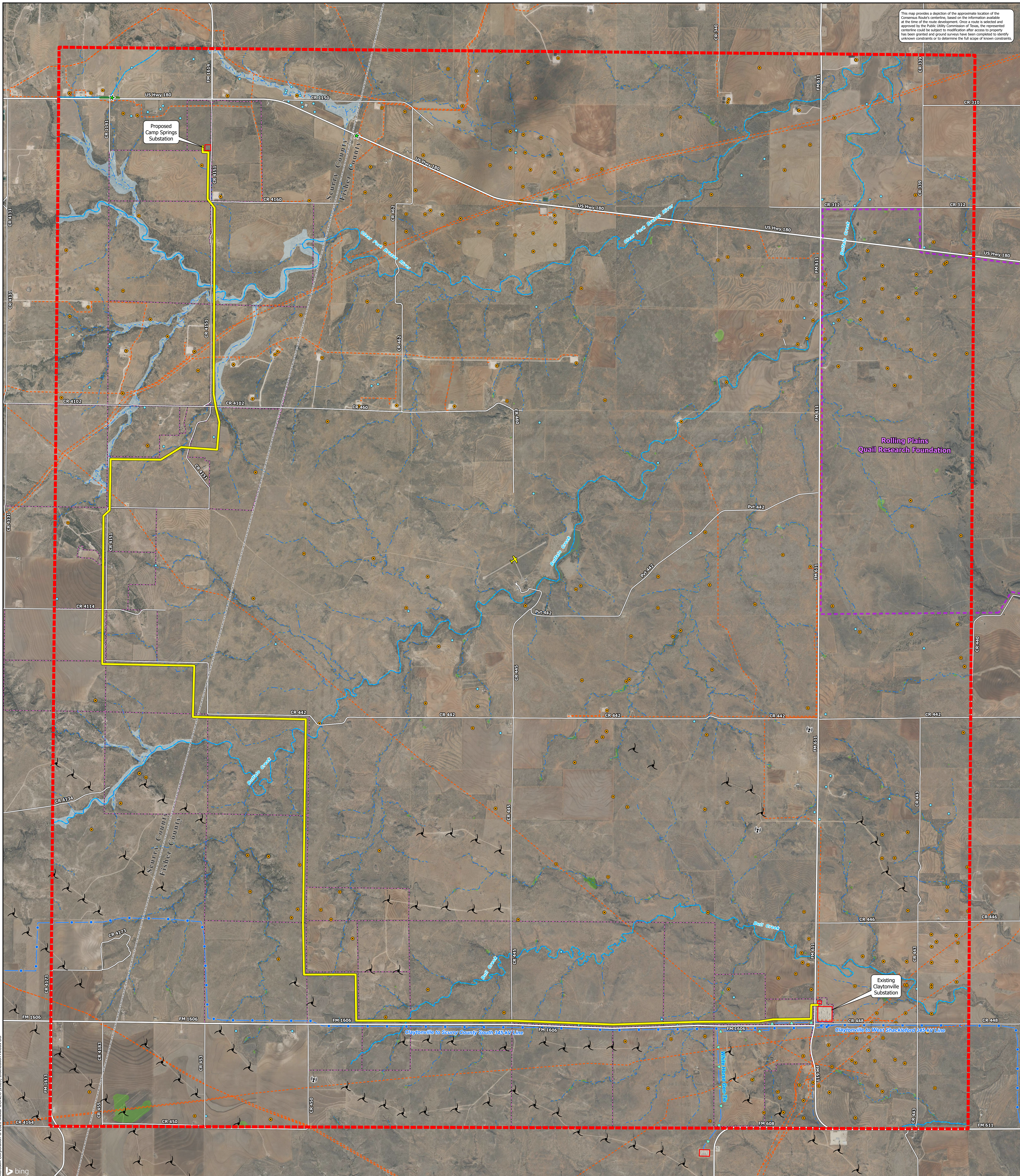


This map provides a depiction of the approximate location of the Consensus Route's centerline, based on the information available at the time of the route development. Once a route is selected and approved by the Public Utility Commission of Texas, the represented centerline could be subject to modification after access to property has been granted and ground surveys have been completed to identify unknown constraints or to determine the full scope of known constraints.



- Consensus Route
- Substation
- ★ Historic Marker
- ⊙ Electronic Communications Tower
- ✈ Private Landing Strip
- ✈ Wind Turbine
- Water Well
- Oil / Gas Well
- Creek / Stream
- Pipeline
- Streets
- Existing 345-kV Transmission Line
- Existing 345-kV Gen-Tie Line
- Park / Recreation Area
- Wetland
- 100-Year Floodplain
- County Boundary
- Parcel Boundary
- Study Area

Imagery: Bing Maps, January 2022.

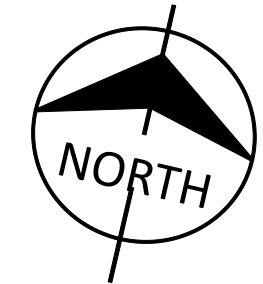
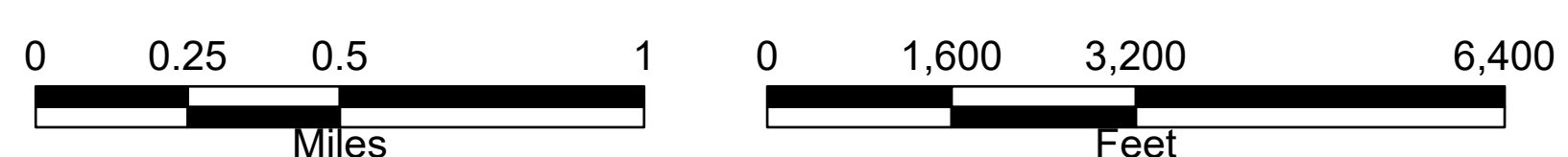


Figure 2-2
Consensus Route in Relation to Environmental and Land Use Constraints for the Claytonville to Camp Springs 138 kV Transmission Line Project
 Lone Star Transmission
 Scurry and Fisher Counties, Texas

Source: ESRI; TH; FAA; USWTD; TWDB; RRC; USGS NHD; TXDOT; EIA; USFWS NWI; FEMA; Burns & McDonnell Engineering Company, Inc.

Issued: 7/26/2023